

# Inductive Sensors NAMUR Sensors

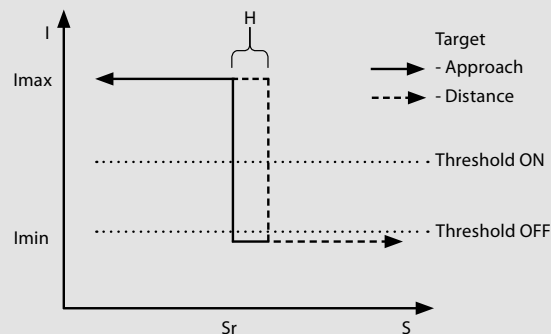


## Product features

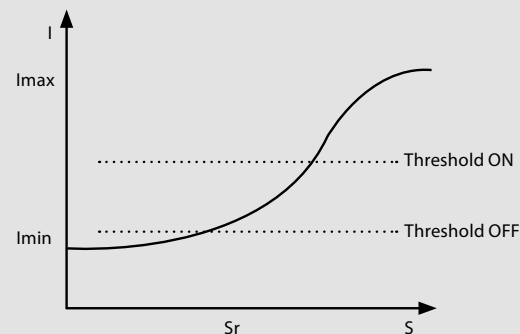
- Metric types: M04 – M30
- Special types: Ø 34, square
- Sensing distance: 0.6 mm – 10 mm
- Switching function: NO contact and NC contact
- Enclosure material: Stainless steel and brass enclosure

## Good to know ...

By using Namur sensors, short circuits and cable breaks can be detected.



• non-continuous characteristic curve



• continuous characteristic curve

## Options

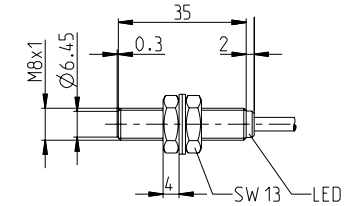
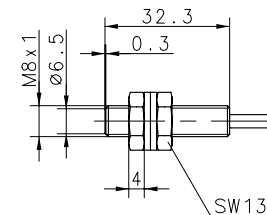
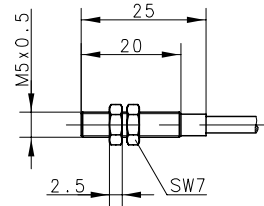
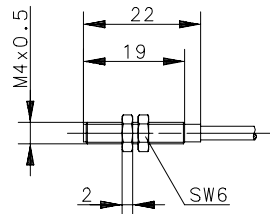
- Cable and connector assembly
- The enclosures can be adapted
- Product adaptations and modifications
- Customized development
- ATEX Namur sensors can be found in the "Inductive ATEX sensors" chapter

Further NAMUR sensors can be found in the EX chapter from p. 156



## INDUCTIVE SENSORS NAMUR Type M4, M5, M8

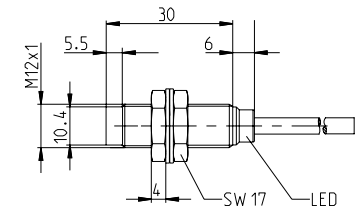
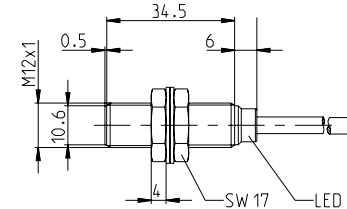
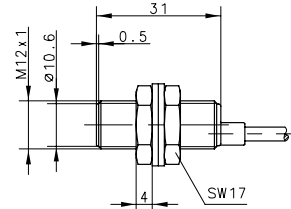
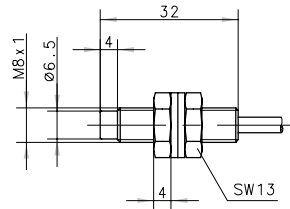
Type	M4	M5	M8	M8
Enclosure material	CuZn39Pb3	CuZn39Pb3	Stainless steel 1.4305	Stainless steel 1.4305
Type of installation	flush	flush	flush	flush
Nominal sensing distance	0.6 mm	1 mm	1.5 mm	2 mm
Type of connection	Cable 2 m	Cable 2 m	Cable 2 m	Cable 2 m
Special feature	continuous characteristic curve	continuous characteristic curve	continuous characteristic curve	NO contact / non-contin. characteristic curve
<b>NAMUR DC</b>	<b>6501699006</b> KIB-M04EA/0,6-2	<b>6501699008</b> KIB-M05EA/001-2	<b>6501601003</b> KIB-M08EA/1,5-2	<b>6501601007</b> KIB-M08ES/002-L2
<b>Technical data</b>				
Rated operating voltage range	$U_b$ 5–30 VDC	5–25 VDC	5–25 VDC	5–25 VDC
Rated operating current	$I_e$ –	–	–	–
Max. switching voltage	F $\leq 10$ Hz	$\approx 3$ kHz	$\approx 1$ kHz	$\approx 1.5$ kHz
Short circuit-protection	–	–	–	–
Function/operating voltage indicator	–/–	–/–	–/–	LED/–
<b>Mechanical data</b>				
Ambient temperature (min/max)	–25°C/+70°C	–25°C/+70°C	–25°C/+70°C	–25°C/+70°C
Protection class in accordance with IEC 529, EN 60529	IP67	IP67	IP67	IP67
Connection	2 x 0.055 mm <sup>2</sup>	2 x 0.14 mm <sup>2</sup>	2 x 0.25 mm <sup>2</sup>	2 x 0.34 mm <sup>2</sup>



# INDUCTIVE SENSORS NAMUR Type M8, M12



Type	M8	M12	M12	M12
Enclosure material	Stainless steel 1.4305	CuZn39Pb3	CuZn39Pb3	CuZn39Pb3
Type of installation	non-flush	flush	flush	non-flush
Nominal sensing distance	2 mm	2 mm	4 mm	4 mm
Type of connection	Cable 2 m	Cable 2 m	Cable 2 m	Cable 2 m
Special feature	continuous characteristic curve	continuous characteristic curve	NO contact / non-contin. charact. curve	NC contact / non-contin. charact. curve
<b>NAMUR DC</b>	<b>6501601005</b> KIN-M08EA/002-2	<b>6501624760</b> KIB-M12EA/002-2	<b>6501624004</b> KIB-M12ES/004-L2	<b>6501625004</b> KIN-M12EÖ/004-KL2
<b>Technical data</b>				
Rated operating voltage range	$U_b$ 5–25 VDC	5–25 VDC	5–25 VDC	5–30 VDC
Rated operating current	$I_e$ –	–	–	–
Max. switching voltage	F $\approx$ 1 kHz	$\leq$ 800 Hz	$\approx$ 1 kHz	$\approx$ 1 kHz
Short circuit-protection	–	–	–	–
Function/operating voltage indicator	–/–	–/–	–/–	–/–
<b>Mechanical data</b>				
Ambient temperature (min/max)	–25°C/+70°C	–25°C/+70°C	–25°C/+70°C	–25°C/+70°C
Protection class in accordance with IEC 529, EN 60529	IP67	IP67	IP67	IP67
Connection	2 x 0.25 mm <sup>2</sup>	2 x 0.25 mm <sup>2</sup>	2 x 0.34 mm <sup>2</sup>	2 x 0.34 mm <sup>2</sup>



# INDUCTIVE SENSORS NAMUR Type M12, M18, M30



Type	M12	M18	M18	M30
Enclosure material	CuZn39Pb3	CuZn39Pb3	CuZn39Pb3	CuZn39Pb3
Type of installation	non-flush	flush	flush	flush
Nominal sensing distance	6 mm	5 mm	8 mm	10 mm
Type of connection	Cable 2 m	Cable 2 m	Cable 2 m	Cable 2 m
Special feature	Sensing dist. / contin. characteristic curve	continuous characteristic curve	NO contact / non-contin. charact. curve	continuous characteristic curve
<b>NAMUR DC</b>	<b>6601625418</b> KIN-M12EA/006-L2E	<b>6501626762</b> KIB-M18EA/005-2	<b>6501638001</b> KIB-M18ES/008-L2	<b>6501699012</b> KIB-M30EA/010-2
<b>Technical data</b>				
Rated operating voltage range	$U_b$ 5–25 VDC	5–25 VDC	5–25 VDC	5–25 VDC
Rated operating current	$I_e$ –	–	–	–
Max. switching voltage	F $\leq 200$ Hz	$\leq 400$ Hz	$\approx 500$ Hz	$\leq 300$ Hz
Short circuit-protection	–	–	–	–
Function/operating voltage indicator	–/–	–/–	LED/–	–/–
<b>Mechanical data</b>				
Ambient temperature (min/max)	–25°C/+70°C	–25°C/+70°C	–25°C/+75°C	–25°C/+70°C
Protection class in accordance with IEC 529, EN 60529	IP67	IP67	IP67	IP67
Connection	2 x 0.25 mm <sup>2</sup>	2 x 0.5 mm <sup>2</sup>	2 x 0.34 mm <sup>2</sup>	2 x 0.5 mm <sup>2</sup>

